

Art Adventures in the Subway

As you travel around New York City using public transportation, you can find many works of art along the way!

This resource is a starting place for things to look for, think about, or discuss and share.

There are some suggestions for stations and art to explore in each borough. Or, you can also use the questions below to look at and think about any of the art that you encounter as you travel!

- Look closely at the details in this artwork - what do you notice?
- What colors, shapes, and patterns do you see?
- Does this artwork remind you of anything you've seen before? Is there anything that surprises you?
- Based on looking at the details, what can you say about how this was made?
- Sometimes artists think about the location and neighborhood when creating a work of art in a station. Can you see anything in this artwork that might tell us about the neighborhood?
- How does this artwork change your experience in this subway station?

Art Adventures in the Subway: Manhattan



23rd Street Station (F/M), **Stationary Figures**,
by William Wegman



81st Street Station (B/C), **For Want of a Nail**,
by MTA Arts for Transit Collaborative



72 Street Station (Q), **Perfect Strangers**,
by Vik Muniz



135 Street Station (3), **Harlem Timeline**,
by Willie Birch



Times Square 42 Street Station
(N/Q/R/S/W/1/2/3/7), **Times Square Mural**,
by Roy Lichtenstein

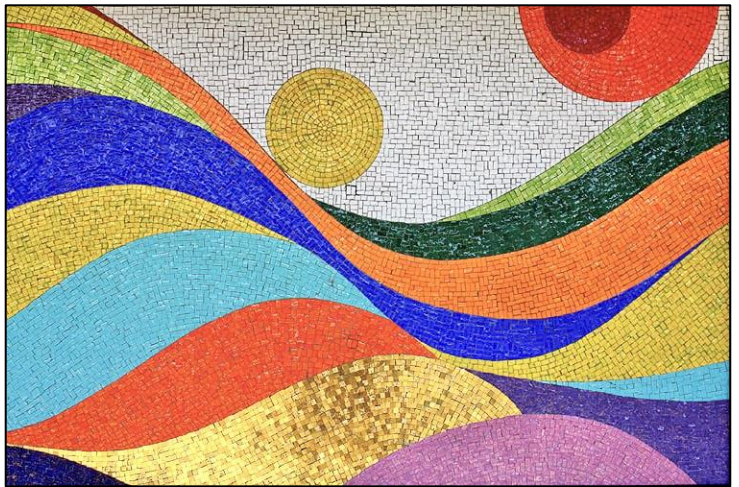


191 Street Station (1), **Primavera**,
by Raúl Colón

Art Adventures in the Subway: The Bronx



Bedford Park Blvd- Lehman College Station (4), **Community Garden**, by Andrea Dezsö



Buhre Avenue Station (6), **Have a Happy Day**, by Soonae Tark



Freeman Street Station (2/5), **The El**, by Daniel Hauben



West Farms Square Station (2/5), **Animal Tracks**, by Naomi Campbell



167 Street Station (B/D), **Beacons**, by Rico Gatson



231 Street Station (1), **Magic Realism in Kingsbridge**, by Felipe Galdino

Art Adventures in the Subway: Queens



Astoria Boulevard Station (N/W), **I am a Rainbow Too**, by Jeffrey Gibson



Flushing- Main Street Station (7), **Happy World**, by Ik-Joong Kang



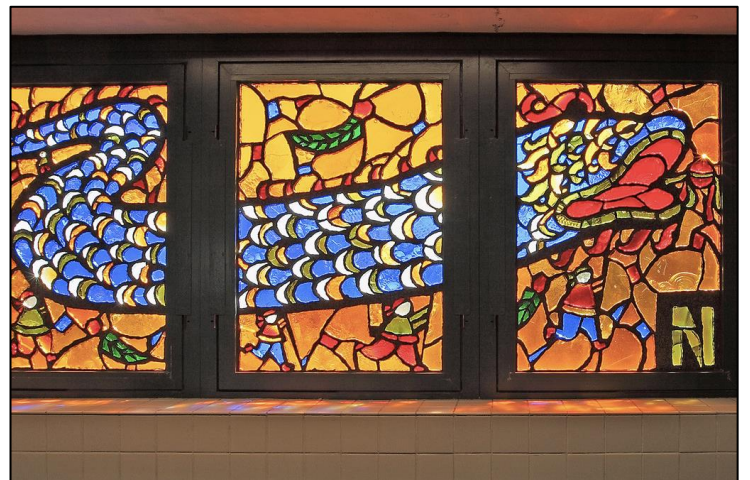
Court Square Station (G/7), **Stream**, by Elizabeth Murray



Queens Plaza Station (E/M/R), **Look Up, Not Down**, by Ellen Harvey



Beach 67 Street Station (A), **On and Off the Boardwalk**, by Ingo Fast

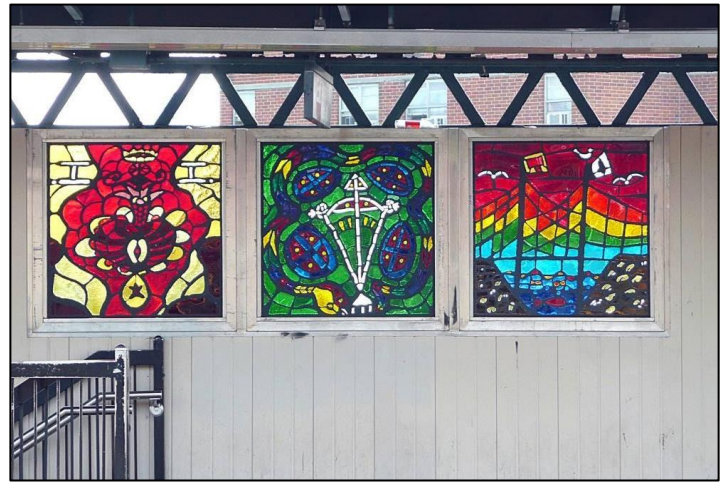


40 Street- Lowery Street Station (7), **Q is for Queens**, by Yumi Heo

Art Adventures in the Subway: Brooklyn



53rd Street Station (R), **Untitled**,
by Mickalene Thomas



Halsey Street Station (J), **Ancestral Letters in Solscript**, by SOL'SAX



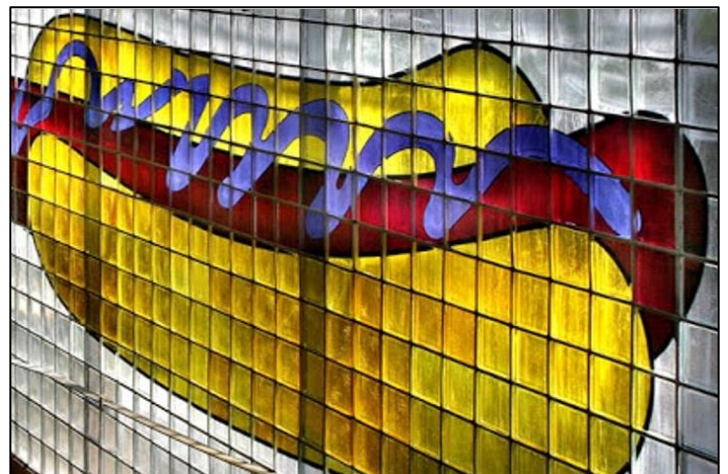
Utica Avenue Station (A/C), **Good Morning, Good Night**, by Hugo Consuegra



New Lots Ave Station (L), **16 Windows**,
by Eugenie Tung



Jay Street Metrotech Station (A/C/F/R),
Departures and Arrivals, by Ben Snead



Stillwell Ave Coney Island Station (D/F/N/Q),
My Coney Island Baby, by Robert Wilson

Art Adventures in the Subway Staten Island



Arthur Kill Station (SIR), **Tottenville Sun, Tottenville Sky**, by Jenna Lucente



Arthur Kill Station (SIR), **Tottenville Sun, Tottenville Sky**, by Jenna Lucente



Arthur Kill Station (SIR), **Tottenville Sun, Tottenville Sky**, by Jenna Lucente



Richmond Valley Station (SIR), **A Portrayal of Life at Mill Creek** by Everett



Richmond Valley Station (SIR), **A Portrayal of Life at Mill Creek** by Everett



Richmond Valley Station (SIR), **A Portrayal of Life at Mill Creek** by Everett